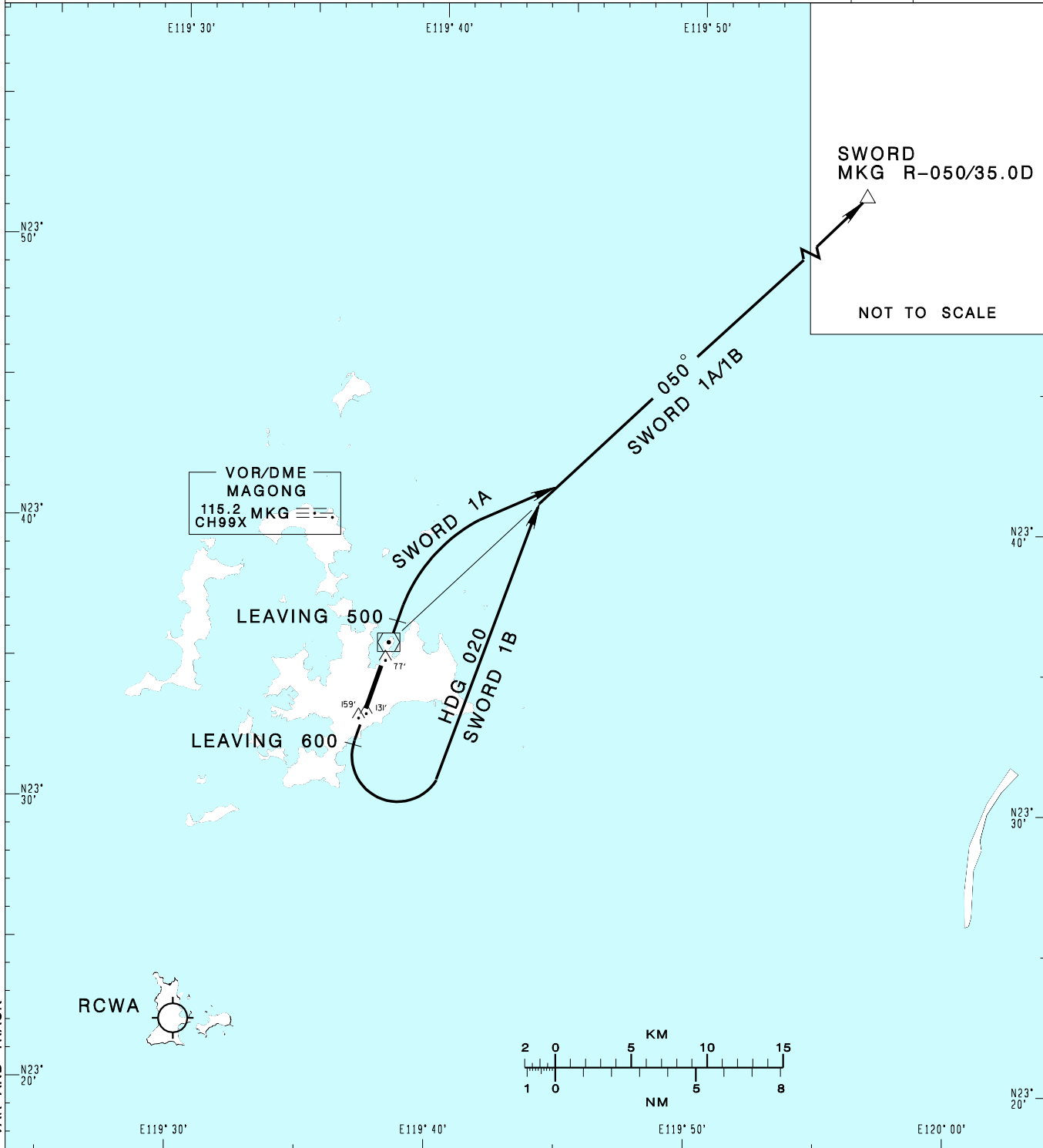


**澎湖機場**  
PENGHU AD

RCQC SID  
SWORD 1A(RWY02)  
SWORD 1B(RWY20)

KAOHSIUNG APP 128.1 234.8	MAGONG TWR 118.3 236.6	ATIS 127.05	VAR 4°-2022 ↑	2000' MSA ARP 25NM
Apt Elev: 103'		Trans Level: FL130		
BEARINGS ARE MAGNETIC; DISTANCES ARE NAUTICAL MILES; ELEVATIONS, HEIGHTS IN FEET				



CHANGES: UPDATE MAG VAR AND TRACK

**SWORD ONE ALFA DEPARTURE**  
Climb on RWY HDG until leaving 500ft, then turn right to track MKG R-050 to SWORD to join A1.

**SWORD ONE BRAVO DEPARTURE**  
Climb on RWY HDG until leaving 600ft, then turn left HDG 020 to track MKG R-050 to SWORD to join A1.

**NOTE**  
1. Caution close-in obstacles (trees, poles & water tower):  
159ft MSL, 794m & 131ft MSL, 292m south of THR02;  
77ft MSL, 436m north of THR20.  
2. SWORD 1B: ATS surveillance required.